

DASCO Medical Office Building

Saint Joseph Medical Center

Towson, Maryland

BUILDING INFORMATION:

4 STORY, 64,000 SQ. FT.
MEDICAL OFFICE BUILDING
LOCATED ON THE SAINT
JOSEPH MEDICAL CENTER
CAMPUS.



OWNER: DASCO COMPANIES

GENERAL CONTRACTOR/CONSTRUCTION MANAGER: WHITING-TURNER

ARCHITECT: COCHRAN, STEPHENSON & DONKERVOET,
INCORPORATED ARCHITECTS

MECHANICAL/ELECTRICAL: LEACH WALLACE ASSOCIATES, INC.

STRUCTURAL: MORABITO CONSULTANTS, INC.

CIVIL: SITE RESOURCES, INC.

CONSTRUCTION:

- SHELL AND CORE: OCTOBER 10, 2005 TO NOVEMBER 16, 2006
- EXPANSION AND FINAL BUILD OUT: TENTATIVE COMPLETION NOVEMBER 2007
- AIA III GUARENTEED COST PLUS FEE

STRUCTURAL SYSTEM:

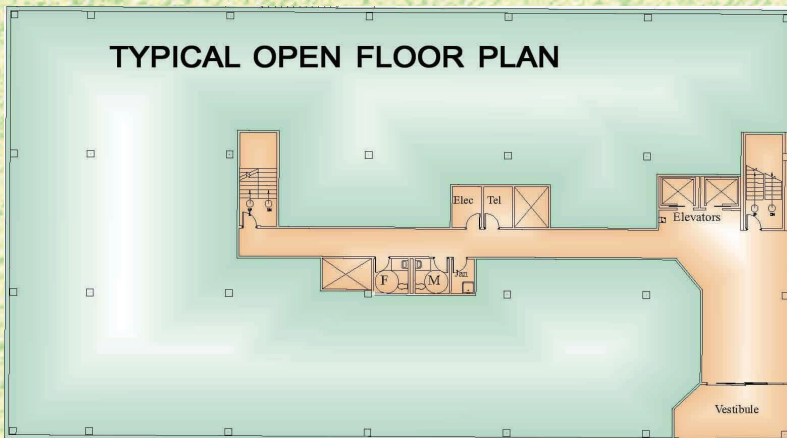
- SPREAD CONCRETE FOOTINGS
- WIDE FLANGE BEAMS AND COLUMNS
- 3-1/2" CONCRETE SLAB ON A 3", 18 GAUGE COMPOSITE METAL DECK

MECHANICAL SYSTEM:

- 3 HIGH EFFICIENCY DIRECT EXPANSION PACKAGED ROOF TOP AIR HANDLING UNITS, 20% OUTDOOR AIR
- EACH SERVES FAN POWERED VARIABLE AIR VOLUME CONTROL BOXES WITH ELECTRIC REHEAT COILS
- CEILING PLENUM RETURN

ELECTRICAL SYSTEM:

- 1500 KVA TRANSFORMER, UTILITY
- 480Y/277V, 2500 AMP MAIN SWITCHBOARD SERVES 2 AHUS AND 4 XFMRs
- 150 KVA, 3F, 480VD x 208Y/120 XFMR, EACH FLOOR (4 TOTAL)
- 2x2, 3 BULB F17T8 FLOURESCENT LIGHTING FIXTURES



CHRIS NICOLAIS

MECHANICAL